

Approved  
4/20/24

## BOARD MEETING MINUTES

Date: Saturday, March 9, 2024

Time: 10:00a.m.

Place: Carlisle Baptist Church

### 1. Call to Order

Meeting was called to order by Kelle Rahm, Chairman at 10:00a.m.

### 2. Roll Call - the following board members were present:

Bertha Corley

Joe Chambers

Kelly Harrell

Kelle Rahm

Travis Elliott – arrived 10:09a.m.

### 3. Approval of meeting minutes from:

a. Board Meeting minutes from 2/10/24 were sent to board members in advance. Joe Chambers made motion to accept the meeting minutes, Bertha Corley seconded. The motion to accept board minutes were approved, none opposed. Travis Elliott was not in attendance at that time to vote.

### 4. Reports:

#### a. Financial

Kelly Harrell read the financial report for the month of February which is attached to these meeting minutes. Bertha Corley made Motion to accept the financial report. Joe Chambers seconded. All members were in Favor, none opposed. Travis Elliott was not in attendance at the time to vote.

#### b. Roads

Joe Chambers stated roads are holding but need to keep up with maintenance. Kelle Rahm and Travis Elliott have been working on the roads to grate them.

#### c. Community Communications

Received email from property owner requesting minutes to be posted on the website. Per the Texas Property code (see below) this is not a requirement, and members should be encouraged to attend the monthly meetings, however from a community communications standpoint this is something that would help to keep the community informed as to what is happening at the meetings. Kelle reiterated that in a previous meeting the board had voted to only put dedicatory instruments on the website.

#### *Texas Property Code - PROP § 209.0051. Open Board Meetings:*

*(d) The board shall keep a record of each regular or special board meeting in the form of written minutes of the meeting. The board shall make meeting records, including approved minutes, available to a member for inspection and copying on the member's written request to the property owners' association's managing agent at the address appearing on the most recently filed management certificate or, if there is not a managing agent, to the board.*

Kelly Harrell made a motion to place all meeting minutes back on the website. Joe Chambers seconded the motion. All board members were in favor none were opposed. Kelle Rahm and Travis Elliott will work to get prior meeting minutes uploaded to the website once the current technical glitch is resolved.

#### d. Fundraising

Discussion regarding a lunch at the general meeting – tabled to committee. The Committee was requested to take minutes of their meetings and furnish to the Board of Directors. It was stated that although committees are purely advisory in nature, since they provide findings, reports and recommendations to discuss particular items of business that meeting minutes should be part of the CBAPOA record. Kelle Rahm will reach out to the fire station to see if it will be available for the annual meeting.



**5. Old Business:**

a. Discuss and act on Bank card/Electronic payments and POA phone  
CBA phone access was tabled. Kelly Harrell made motion to set up PayPal as payment option for maintenance fees. Joe Chambers seconded. All board members were in favor, none opposed.

b. Discuss and act on bylaws change (Section C3) to meet state code  
Our director structure is not in compliance with the state code because our secretary is not considered a board member and the secretary and treasurer have always been the same person. As a result, we need to modify the bylaws to comply.

*BUSINESS ORGANIZATIONS CODE, TITLE 2. CORPORATIONS, CHAPTER 22. NONPROFIT CORPORATIONS, SUBCHAPTER E. MANAGEMENT Sec. 22.231. OFFICERS. (a) The officers of a corporation shall include a president and a secretary and may include one or more vice presidents, a treasurer, and other officers and assistant officers as considered necessary. Any two or more offices, other than the offices of president and secretary, may be held by the same person.*

Chairwoman read the proposed changes to Section C3 as follows: "An election will be held annually at the regular meeting to maintain (5) Directors. Directors must be lot owners in Camp Branch Acres Subdivision. The Directors will elect a chairman, who will only vote in case of a tie, and a secretary from their number. Any two or more board offices, other than the offices of Chairman and Secretary, may be held by the same person. The term for Directors will be 2 years, and each can be re-elected for an additional 2 years. At the end of 4 years in office, a director must have a one-year break before being eligible for re-election. If no one is available to fill a vacancy, the incumbent may be re-elected until the next election when a replacement candidate becomes available and is elected by the membership. (Tex. Bus. Org. Code 22.231)". Travis Elliott motioned to adopt the proposed changes that were read by the Chairwoman, Kelly Harrell seconded. All Board members were in favor, none opposed.

c. Discuss and act on front entrance plans  
Kelly Harrell presented the design for the front entrance; the tall sign will be made of wood and green epoxy and the smaller sign will be a marquee that with a locking glass front for notices. The only difference might be the rock depending on what is available at the time and the cost. A sponsor was secured to cover the cost of all this, therefore there will be no cost to the property owners. Joe Chambers voted to accept the design as shown. Travis Elliot seconded the motion. All Board members were in favor, none were opposed.



d. Discuss and act on newsletter and request for candidates  
Newsletter was discussed along with request for candidates. Will send out newsletter the first of April need snippet from Treasurer, Roads, Fund Raising, and Community liaison before the end of March. Will include in the newsletter the request for candidates. A property owner sent an email stating we are required to include an agenda with each meeting. Per the property code the only meeting that requires an agenda is the General Meeting. In the past the board was called on the carpet for not following the agenda as things were added and also because we did not follow the agenda in the order it was listed. Our bylaws did not adopt any parliamentary procedure nor has any board set this precedence. With that being said since we change things up until the day of the meeting it is difficult to send a finalized agenda.



**6. New Business:**

**a. Discuss and act on current Expenses**

All current expenses were noted and approved.

**b. Discuss general meeting plans/any bylaws changes for vote**

Per Travis Elliott, the church is not available for us to have the meeting at the fellowship hall as the building is not ready. Travis suggested the fire dept. Kelle Rahm stated Fire Dept. requests a donation and we will possibly need to bring our own tables and chairs. Donation of \$200.00 was suggested. We will check with the Fire Dept. to see if it is available. Suggestion was made that we could donate water.

**c. Discuss fire safety as per Fire Chief**

Per fire chief property owners are not allowed to burn trash. Will need to add this information in the newsletter. A copy of the TCEQ Outdoor Burning in Texas requirements are attached to these minutes. Suggestion to have the fire chief come to one of the meetings to review fire safety.

**7. Next Meeting Date**

Next meeting is set for April 20, 2024 at 9:00a.m. at the Carlisle Baptist Church

**8. Adjourn**

Bertha Corley made motion to adjourn, Kelly Harrell seconded, passed. Meeting adjourned at 11:07a.m.

**9. Executive Session**

Executive Session was called to order at 11:11a.m. Discussed past due letters that were sent last month. The board reviewed the property owners with outstanding balances and made decisions regarding putting liens on properties.

Executive Session adjourned 11:30a.m.





# Outdoor Burning in Texas

---

*Field Operations*

Texas Commission on Environmental Quality

RG-049  
Revised February 2015

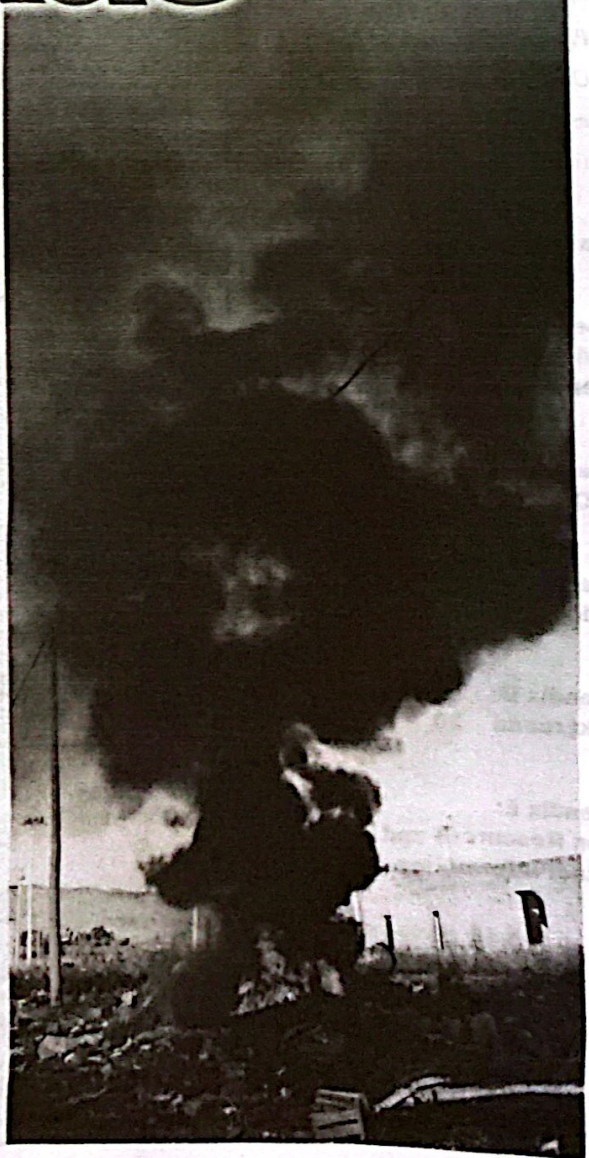




# Outdoor Burning in Texas

*Field Operations*

Texas  
Commission on  
Environmental  
Quality





# Contents

**Introduction 5**

Limitations of This Guide 5

**The Outdoor Burning Rule Explained 5**

Summary of the Rule 5

Exceptions to the Prohibition 6

*Firefighter Training 6*

*Fires for Recreation, Ceremonies, Cooking, or Warmth 7*

*Fires for Disposal or Land Clearing 7*

*Prescribed Burns 10*

*Pipeline Breaks and Oil Spills 10*

*Other Situations 11*

General Requirements for Burning 11

Practical Alternatives to Burning 12

**Related TCEQ Publications 12**

**Appendix A:**

**Outdoor Burning—**

**When Should You Notify the TCEQ? 13**

**Appendix B:**

**TCEQ Areas and Regional Offices 14**

**Appendix C:**

**Outdoor Burning Rule 16**

**Appendix D:**


**Background 20**

**Appendix E:**

**Arson Resources and**

**Contact Information 22**



 printed on recycled paper using vegetable-based ink.





## Introduction

This guide helps interpret the revised Outdoor Burning Rule, Title 30, Texas Administrative Code, Sections 111.201–221,<sup>1</sup> for the general public, the regulated community, and responsible state and local officials.

This document covers all aspects of the outdoor burning rule, including:

- exceptions that allow outdoor burning
- general requirements for allowing outdoor burning
- notification requirements for allowable outdoor burning

At the end of various sections, common questions relating to the material in the section are answered.

State and local officials may find Appendixes C and D to be particularly useful. They contain a copy of the rule itself and background information for each of its sections.

This guide is not a substitute for the actual rule. A current copy of the rule can be obtained from the TCEQ by calling 512-239-0028, or online at <[www.tceq.texas.gov/rules](http://www.tceq.texas.gov/rules)>.

## Limitations of This Guide

This document does not include requirements of other government agencies. Local ordinances and governmental entities may restrict when, where, how, and if individuals and organizations can conduct outdoor burning.

Some municipalities have enacted local ordinances that prohibit or restrict outdoor fires within their corporate limits. Residents should always check with municipal officials about possible limitations on outdoor burning so they do not unintentionally violate an existing ordinance.

During extreme fire danger, governmental units may ban outdoor burning to help prevent possibly disastrous wildfires. A county judge and county commissioners' court may issue a ban on outdoor burning that is applicable to unincorporated portions of the county.

In addition, Texas criminal statutes specify penalties that pertain to escaped control fires and wildland fires that were deliberately set. Persons responsible for escaped control or arson wildfires may also be faced with civil suits for damages caused by these fires.

<sup>1</sup> In this document, "30 TAC 111" is short for "Title 30, Texas Administrative Code, Chapter 111."

Numerous authorities, including the National Weather Service and the Texas A&M Forest Service, may issue advisories, watches, or warnings when weather and fuel conditions increase the risk of escaped fires or the severity of wildfires. Public cooperation during the dangerous wildfire conditions is essential to prevent needless wildfires and the losses they may cause.

## The Outdoor Burning Rule Explained

The current version of the Outdoor Burning Rule is the result of a concerted effort to produce a streamlined, unambiguous rule that can be applied consistently and fairly throughout Texas. Its purpose is to protect the environment, promote public health and safety, and avoid nuisance conditions through the sensible regulation of outdoor burning.

## Summary of the Rule

The Outdoor Burning Rule first prohibits outdoor burning anywhere in Texas, and then allows exceptions for specific situations in which burning is necessary or does not pose a threat to the environment. The rule also prescribes conditions that must be met to protect the environment and avoid other adverse impacts when burning is allowed. If burning seems necessary, but the situation does not fit an exception stated in the rule, then it is possible to request a special authorization to conduct burning from the TCEQ.

### *How do I obtain a burning permit from the TCEQ?*

The TCEQ does not issue burning permits. Outdoor burning in general is prohibited in Texas, although the Outdoor Burning Rule (Appendix C) does allow certain exceptions. If your situation fits all requirements for one of the exceptions described in the rule, you may conduct outdoor burning, as long as you comply with all the conditions. Depending on the circumstances, you may also need authorization from the appropriate regional office before you burn. Remember to check local ordinances or other regulations about burning.



*It looks like I can get the TCEQ's authorization to burn, but my neighbors may complain. Do I have to worry about what they think?*

Yes. In addition to common courtesy, the Outdoor Burning Rule requires that certain kinds of burning be conducted downwind of, or at least 300 feet from, any structure containing sensitive receptors (for example, a residence, business, barn, or greenhouse; see box, page 8) located on adjacent properties unless written approval is obtained beforehand from the owner or occupant—the one who will suffer adverse effects—of the adjacent or downwind property. Also, the burning must not cause a nuisance or traffic hazard.

*The rule authorizes (or the TCEQ has authorized) my outdoor burning. Before I actually set the fire, do I have to notify the TCEQ?*

It depends. For certain types of burning, the rule requires you to notify the appropriate TCEQ regional office. For others, you are not required to notify the TCEQ. But, before you strike that match, remember that you may have to contact other agencies—or even your neighbors—as well as the TCEQ. See Appendix A for the notification requirements for the various kinds of burning covered under the rule. Up-to-date information regarding weather conditions can be obtained online through a number of websites. This information should be referenced before conducting outdoor burning in order to determine which way (and how fast) the wind is blowing, whether winds are expected to shift, whether your area is under a temperature inversion, and whether high ozone levels are forecast. Ozone level information is available on TCEQ's Texas Air Quality Forecast page: <[www.tceq.texas.gov/goto/airtoday](http://www.tceq.texas.gov/goto/airtoday)>.

*How do I report someone who is illegally burning outdoors?*

Report the burning to the local air pollution-control office, or the nearest TCEQ regional office. The TCEQ's Environmental Complaint Hotline is 888-777-3186. Complaints can also be submitted by e-mail at <[cmplaint@tceq.texas.gov](mailto:cmplaint@tceq.texas.gov)> or using the online form available at <[www.tceq.texas.gov/complaints](http://www.tceq.texas.gov/complaints)>.

### Exceptions to the Prohibition

The standard exceptions, explained below, cover the most common situations in which burning is an acceptable practice. In most of these instances, the burning must follow the

general requirements outlined later in this document. It may be necessary to notify the TCEQ, local governmental agencies, and neighbors before conducting burning under one of these exceptions. See Appendix A for details on notification requirements in specific situations. There may be local ordinances or county burn bans that regulate burning; if so, the requirements and restrictions of those ordinances must also be met.

### Firefighter Training

Organizations that train firefighters may obtain authorization to conduct outdoor burning for such training, including training in the operation of fire extinguishers. To obtain an authorization, the organization responsible for the training must send a written request to the local air pollution-control agency under contract with the TCEQ, or, if there is no such agency, the appropriate TCEQ regional office. For a list of regional offices, see Appendix B.

If training occurs regularly at a dedicated facility, it may be possible to inform the regional office of all such training events with one annual written notification. If a dedicated training facility conducts training regularly but less often than once a week, a telephone or fax notification will be necessary 24 hours in advance of each event.

Burning conducted to train firefighters does not have to conform to the general requirements for other forms of allowable outdoor burning, but it must not cause a nuisance or traffic hazard. The TCEQ may revoke its authorization if it is used in an attempt to avoid complying with other portions of the Outdoor Burning Rule.

*We want to conduct fire training for our volunteer fire department. Can we burn this abandoned house?*

The training of firefighters may be authorized as an exception to the prohibition on outdoor burning. Submit a written request on behalf of the VFD to the local air pollution-control agency, or, if there is no local agency, the TCEQ office for your region. The TCEQ may authorize such training orally or in writing; if it denies the request, your VFD will receive a notice of denial within 10 working days after the postmark date or the date of personal delivery of the request to the regional office. To ensure that the fire will not form or disperse toxic substances, the local air pollution-control agency or the reviewing TCEQ regional office may require that the building be stripped of many common construction materials—including electrical wiring, lead flashing, carpet, asbestos, and many others—before the fire is ignited.



Note that the burning of abandoned buildings by a fire department is not automatically considered fire training. There must be a specific benefit to the fire department. Simply preventing the spread of fire from an abandoned building to neighboring property is not considered training. Such burns constitute an attempt to circumvent the Outdoor Burning Rule and are prohibited.

**Fires for Recreation, Ceremonies, Cooking, or Warmth**

Outdoor burning is allowed when used solely for recreational or ceremonial purposes, in the noncommercial preparation of food, or exclusively as a means of generating warmth in cold weather. In other words, campfires, bonfires, and cooking fires are allowed. Fires built under this exception may not contain electrical insulation, treated lumber (including paint, stain, varnish, clear coat, or any other kind of treatment), plastics, construction or demolition materials not made of wood, heavy oils, asphaltic materials, potentially explosive materials, chemical wastes, or items containing natural or synthetic rubber. The other general requirements on allowable outdoor burning do not apply to fires covered by this exception, but the burning must not cause a nuisance or traffic hazard.

*May I cook food on my charcoal grill in my backyard?*

Yes. Fires used in the noncommercial preparation of food are allowed.

*May I build a fire in my fireplace?*

Yes. Indoor fires are not regulated by the Outdoor Burning Rule. Domestic-use fireplaces are authorized under the TCEQ's de minimis rules in 30 TAC 116.119.

*Are campfires allowed inside the city limits?*

Fires used solely for recreation or ceremony are allowed by state law; however, local ordinance may prohibit this kind of burning. Make sure no oils, asphalt, synthetic rubber, or other materials that produce heavy smoke are in the fire: they could release toxic gases or cause a nuisance or traffic hazard.

**Fires for Disposal or Land Clearing**

A broad exception for fires to dispose of waste or clear land covers seven more specific categories, described below. Residents of Montgomery County are subject to special restrictions (see below); these restrictions could be extended

to other areas of the state should growth in neighboring counties render them subject to the provisions of Texas Local Government Code 352.082.

**1. Domestic waste.** Domestic waste—in other words, household trash or rubbish—may be burned when the local governmental organization with jurisdiction over such matters does not collect trash and does not authorize a business or other service to do so. To qualify for this exception, the waste must come from a property that is designed to be a private residence and used exclusively as a private residence for no more than three families. The waste must also be burned on the property where it was produced. According to TCEQ rules [30 TAC 101.1(26)], domestic wastes include wastes that normally result from the function of life within a residence—for example, kitchen garbage, untreated lumber, cardboard boxes, packaging, clothing, grass, leaves, and branch trimmings. Such items as tires, construction debris, furniture, carpet, electrical wire, and appliances are not considered to be domestic waste and cannot be burned. Other conditions of the general requirements for outdoor burning do not apply to the burning of domestic waste, but the outdoor burn must not cause a nuisance or traffic hazard.

**2. Diseased animal carcasses.** These may be burned when burning is the most effective means of controlling the spread of disease. The general requirements for outdoor burning do not apply to this exception, but burning under this exception must not cause a nuisance or traffic hazard.

**3. Burning of animal remains by a veterinarian.** A veterinarian may burn animal remains and medical waste—not including sharps (e.g., needles)—associated with animals in his or her care on his or her property if the property is located outside the corporate boundaries of a municipality (or within such boundaries if annexed on or after September 1, 2003). This section prevails over any other law that authorizes a governmental authority to abate a public nuisance. (Texas Occupations Code 801.361.)

**4. On-site burning of waste plant growth.** Trees, brush, grass, leaves, branch trimmings, or other plant growth may be burned on the property on which the material grew in most attainment counties, as described below. In all cases, the plant growth must be burned by the property owner or any other person authorized by the owner.

- *All designated nonattainment counties and some attainment counties.* Burning of waste plant growth is allowed only if the material was generated as a result of right-of-way maintenance, land clearing, or maintenance along water canals, and no practical alternative to burning exists. "Practical alternative" is defined as 'an economically, technologically, ecologically, and logistically viable



option.' See Appendix D. Burning carried out under this exception must conform to all the general requirements for outdoor burning.

- *Most attainment counties.* Burning of waste plant growth is allowed regardless of the activity that generated the material. Practical alternatives need not be considered. Burning carried out under this exception must conform to some of the general requirements for outdoor burning, specifically the requirements in 30 TAC 111.219(3, 4, 6, 7) (see Appendix C). Such burning is also subject to local ordinances that prohibit burning within the corporate limits of a city or town. Some attainment counties are treated as nonattainment counties for the purposes of this exception. Specifically, any attainment county that contains any part of a municipality that extends into a bordering nonattainment county is treated as a nonattainment county for the purposes of this exception.

To determine if your county is an attainment or a nonattainment county for the purposes of this exception, call your regional TCEQ office. TCEQ regional-office phone numbers appear in Appendix B.

**5. Designated burn sites.** This exception allows rural homeowners to transport their yard waste to a designated site for consolidated burning, rather than having numerous smaller fires in the yards of rural neighborhoods. All burning at a designated site must be directly supervised by a fire-department employee. Designated burn sites must be located outside the corporate limits of a municipality and within a county that has a population of less than 50,000. The site must be designated by its owner; designation does not require registration with the agency. A site is designated by:

- posting all entrances to the site with a placard measuring at least 2 feet wide by 4 feet high bearing specific information as stated in 30 TAC 111.209(5)(A) (see Appendix C)—each placard must be clearly visible and legible at all times; and
- specifying residential properties for which the site has been designated, and maintaining a record of those specific residential properties. The record must contain a description of a platted subdivision, a list of all specific residential addresses, or both. This record must be made available within 48 hours of any request by any authority having jurisdiction.

Furthermore, the owner of the site is required to ensure that all activities at the site comply with this exception. The owner must:

- ensure that all waste burned at the site consists of trees, brush, grass, leaves, branch trimmings, or other plant

growth, and was generated at one of the specific residential properties for which the site is designated; and

- ensure that all burning at the site is directly supervised by a paid, on-duty fire department employee who is part of the fire protection personnel and is acting in the scope of his or her employment. The fire-department employee must notify the appropriate TCEQ regional office by phone or fax 24 hours in advance of each burn. The TCEQ will supply the employee with information on practical alternatives to burning.

**6. Crop residues.** When there is no practical alternative, crop residues may be burned as part of agricultural management. Burning carried out under this exception must conform to the general requirements for outdoor burning, and structures containing "sensitive receptors" (see box) must not be negatively affected by the burn. This exception does not apply to crop-residue burning covered by an administrative order.

"Sensitive receptors" include humans and livestock, as well as "sensitive live vegetation" such as nursery plants, mushrooms under cultivation, and plants raised for pharmaceutical production or used in lab experiments. For a complete definition, see 30 TAC 111.203(7) (see Appendix C).

**7. Brush, trees, etc., off-site.** A county or municipal government may request site and burn authorization in writing from the appropriate TCEQ regional office to burn accumulations of brush, trees, and other plant growth that cause a condition detrimental to public health and safety. The burn must occur at a site owned by the local government and will be authorized only if the TCEQ determines that there is no practical alternative. The frequency of such burns may not exceed once every two months, and they cannot be used in place of other sound brush-management practices. Burning conducted under this exception must conform to the general requirements for allowable outdoor burning. The burning may not occur at a municipal landfill without advance permission from the TCEQ.

**Special restrictions in Montgomery County.** Regardless of the seven exceptions given above, in unincorporated areas of Montgomery County it is a criminal offense, as well as a violation of agency rules, to burn household refuse on a lot smaller than five acres or located in a "neighborhood." The terms "neighborhood" and "refuse" are defined in 30 TAC 111.203 (see Appendix C). Under Texas Local Government Code 352.082, this restriction could in the future also apply to certain planned communities if a county adjacent to the



## OUTDOOR BURNING IN TEXAS

one where such a community is located grows to 3.3 million or more in population.

*I live in a small rural town where most people have their trash picked up by a commercial trash-collection service. I can't afford to pay that money each month. May I burn my trash in a 55-gallon drum in my backyard?*

If there is no governmentally provided or authorized trash-collection service available to you, you may burn domestic waste on the property where it is produced, as long as outdoor burning is not prohibited by local rule or ordinance and does not create a nuisance or a traffic hazard.

*May I burn my old oil filters in a metal barrel on my property?*

No. Take oil filters to an authorized recycling site, along with your used oil. You may call 800-CLEAN-UP for more information on recycling.

*I want to burn boxes from my business. The TCEQ rules say that I may burn waste from my residence, but what about waste from my business?*

According to the Outdoor Burning Rule, you can't burn business waste. The exception that allows the burning of domestic waste applies only if the property is used exclusively as a private residence and the local governmental authority does not provide or authorize the collection of waste at the premises where the waste is generated. There is no such exception for businesses. You should look into the possibility of recycling your boxes and other business or commercial wastes such as pallets, cardboard, barrels, etc. or find ways that you or others could reuse them.

*We have a hard time disposing of scrap tires. Will the TCEQ let us burn them?*

No. The rule provides no exception for the disposal of tires through outdoor burning—or any other items that contain natural or synthetic rubber—because of the air pollution that would result. The TCEQ's Scrap Tire Program (512-239-2515, <[www.tceq.texas.gov/tires](http://www.tceq.texas.gov/tires)>) can give you more information regarding proper methods for tire disposal.

*What may be burned at municipal landfills?*

Routine burning is not allowed at municipal landfills.

*I am a licensed veterinarian. Do I need authorization to burn animals that died while in my care?*

Not if you are located outside the corporate boundaries of a municipality (or within those boundaries if annexed on or after September 1, 2003) and you burn the animal remains on property owned by you. You can also burn medical waste associated with the animal, with the exception of sharps (e.g., needles). For details, see section 801.361 of the Texas Occupations Code.

*May I burn trees that I have cut down in my backyard?*

There are a couple of exceptions to the prohibition on outdoor burning that may allow you to burn trees.

First, grass, leaves, and branch trimmings from residences are all considered "domestic waste." If your local government does not collect domestic waste and does not authorize a private collector to do so, you may burn material of this type. If such waste collection is available, then it cannot be burned under the domestic-waste exception.

Regardless of whether domestic-waste pickup is available, a separate exception may apply depending on your location. If you are in a county that does not contain any part of a city that extends into a nonattainment county, you may burn plant waste (not all domestic waste) on the property on which it was generated. For information regarding nonattainment counties visit <[www.tceq.texas.gov/airquality/sip](http://www.tceq.texas.gov/airquality/sip)>.

However, under both of these exceptions, the burning must not create a nuisance or traffic hazard, and you must comply with all applicable local rules or ordinances.

*I have some uncleared property inside the city limits that I would like to develop. Hauling the trees and brush off would not be practical because it is too expensive. May I dispose of the trees and brush by burning?*

It depends on the attainment status of the county in which you wish to burn. In designated nonattainment counties, and attainment counties that border nonattainment counties and contain any part of a city that extends into the nonattainment county, this type of burning does not meet the exception unless the municipal government has enacted ordinances that permit burning consistent with state law. You must consider alternatives such as chipping or trench burning. If there is no practical alternative, and the city has not enacted ordinances that permit burning, you may request



written permission from the TCEQ for authorization to burn, and you cannot commence with the burning until you receive such authorization. Such requests are evaluated on a case-by-case basis. Contact the appropriate TCEQ regional office for guidance.

In all other counties this burning meets the agency exception unless the municipal government has enacted ordinances that prohibit burning.

For information regarding nonattainment counties visit <[www.tceq.texas.gov/airquality/sip](http://www.tceq.texas.gov/airquality/sip)>.

*I am in the business of trimming people's trees and shrubs in town. I realize that the tree limbs and trimmings can't be burned in town, but I own some land outside of town. May I take it out there and burn it?*

No. The Outdoor Burning Rule allows the burning of land clearing materials only at the site of the land clearing.

*Why are sugar growers allowed to burn their cane fields?*

At the request of Rio Grande Valley Sugar Growers, Inc., the TCEQ conducted extended air-monitoring studies of the Texas sugarcane-growing area. The agency determined that no practical alternative to burning exists for this industry. The TCEQ then adopted an agreed order with the Rio Grande Valley Sugar Growers, Inc., that outlines conditions under which the sugarcane industry can conduct burning.

*The burning of corn stubble produces a great amount of smoke. Is this type of burning authorized?*

Yes. Burning for crop management is allowed if there is no practical alternative, if it is conducted under appropriate weather conditions and at appropriate times, and if it does not cause a nuisance or traffic hazard.

*There are tree limbs in an area of our community that pose a public safety risk. What are our options for solving this problem?*

Brush, trees, and other forms of plant growth that present a detriment to public health and safety may be burned by a county or municipal government at a site it owns upon receiving site and burn authorization from the TCEQ. Such burning can only be authorized when there is no practical alternative, and it may be done no more than once every two months. The local government has the burden of proving

that there is no practical alternative and that the growth poses a detriment to public health or safety. Burning to augment normal brush disposal cannot be a continual or a standard operating procedure and cannot be conducted at municipal landfills unless authorized in writing by the TCEQ.

*Is hay that has been used as bedding for animals considered crop residue?*

No. Hay used for this purpose will need to be properly disposed of by a method other than burning. Check with your local county officials or agricultural organizations. They may need this material for erosion control or other purposes.

### Prescribed Burns

This exception covers the use of fire to manage forests, rangeland, wildland and wildlife, coastal salt marsh in 14 counties, and for wildfire-hazard mitigation. All of these forms of burning are subject to the general requirements for allowable outdoor burning. Coastal salt-marsh burning also entails more specific notification requirements, which are stated in 30 TAC 111.211(2)(A) and (B).

*Who can I contact for technical information relating to prescribed burning?*

A good source is the Prescribed Burning Board of the Texas Department of Agriculture, which sets standards for prescribed burning; develops a comprehensive training curriculum for prescribed-burn managers and sets standards for their certification, recertification and training; establishes minimum education and professional requirements for instructors for the approved curriculum; and sets minimum insurance requirements for prescribed-burn managers.

For safety reasons, a prescribed-burn plan may call for burning at night. Such a plan requires special authorization and must consider the effects of a temperature inversion on smoke dispersal in order to protect public health.

### Pipeline Breaks and Oil Spills

An oil (or other hydrocarbon) spill or pipeline break may trigger a requirement to notify the appropriate TCEQ regional office. Once notified of the spill, the regional office staff will decide whether burning is necessary to protect the public welfare. If the TCEQ gives the company or person responsible for the spill permission to burn, the TCEQ may also require that company or person to take samples and monitor the site to determine and evaluate environmental impacts.



**Other Situations**

If a situation may require outdoor burning but is not covered by the previously described exceptions, you may request permission to burn from the TCEQ regional office. Its staff, acting on behalf of the executive director, will consider whether there is a practical alternative, whether the burning will cause or contribute to a nuisance or traffic hazard, and whether the practice will violate any federal or state primary or secondary standard for ambient air quality. Such an authorization may require you to follow certain procedures to control or abate emissions. The authorization may be revoked at any time if the TCEQ determines that the outdoor burning is creating a nuisance, violating any provision of an applicable permit, causing a violation of any air quality standard, or not conforming to the conditions specified in the authorization.

*A bad storm knocked a lot of trees down in our community. May we burn the debris? May we haul it to the landfill and burn it?*

Regardless of whether the brush is to be burned on-site or at the landfill, this type of burning is not specifically authorized in the exceptions to the prohibition on outdoor burning. However, the TCEQ may authorize the disposal of storm debris if there are no practical alternatives. Such requests are evaluated on a case-by-case basis. Contact the appropriate TCEQ regional office for guidance.

*Why are housing subdivisions allowed to dig pits and burn their land-clearing materials within city limits?*

They are using a process called air-curtain incineration (trench burning), which is authorized under a permit by rule or standard permit. Companies that specialize in that business must obtain prior TCEQ approval, obtain a federal operating permit, and follow specific written operating procedures.

**General Requirements for Outdoor Burning**

- If a proposed outdoor burn meets the conditions for an exception to the general prohibition of outdoor burning, additional requirements designed to protect public health, safety, and the environment may apply. They are designed to reduce the likelihood that the burning will create a nuisance, cause a hazard, or harm the environment. The specific requirements applicable to each type of allowable outdoor burn are identified in the

exceptions (see Appendix C). The party responsible for the burn remains liable for damages, injuries, or other consequences that may result from burning, even when it is carried out in compliance with these regulations.

- Notify the Texas A&M Forest Service before carrying out any prescribed or controlled burns that are intended for forest management.
- Burn only outside the corporate limits of a city or town, unless the incorporated city or town has an ordinance, consistent with the Texas Clean Air Act, Subchapter E, that permits burning.
- Commence or continue burning only when the wind direction and other weather conditions are such that the smoke and other pollutants will not present a hazard to any public road, landing strip, or navigable water (e.g., lake, river, stream, or bay) or have an adverse effect on any off-site structure containing "sensitive receptors" (e.g., a residence, business, farm building, or greenhouse; see box, page 8). Up to date information regarding weather conditions can be obtained online through a number of websites. This information should be referenced before conducting outdoor burning in order to determine the direction and speed of the wind, whether winds are expected to shift, whether your area is under a temperature inversion, and whether high ozone levels are forecast. Ozone level information is available on the TCEQ's Texas Air Quality Forecast page: <[www.tceq.texas.gov/goto/airtoday](http://www.tceq.texas.gov/goto/airtoday)>.
- Post someone to flag traffic if at any time the burning causes or may tend to cause smoke to blow onto or across a road or highway.
- Keep fires downwind of, or at least 300 feet away from, any neighboring structure that contains sensitive receptors. This requirement may be waived only with the prior written approval of whoever owns or rents the adjacent property and either resides or conducts business there.
- Begin burning no earlier than one hour after sunrise. Cease burning the same day no later than one hour before sunset, and make sure that a responsible party is present while the burn is active and the fire is progressing. At the end of the burn, extinguish isolated residual fires or smoldering objects if the smoke they produce can be a nuisance or a traffic hazard. Do not start burning unless weather conditions are such that the smoke will dissipate (winds of at least 6 miles per hour; no temperature inversions) while still allowing the fire to be contained and controlled (winds no faster than 23 miles per hour).



- Do not burn any electrical insulation, treated lumber, plastics, non-wooden construction or demolition materials, heavy oils, asphaltic materials, potentially explosive materials, chemical wastes, or items that contain natural or synthetic rubber.

*My situation doesn't fit any of the exceptions given in the rule, but I still think that burning is the only practical alternative. What can I do?*

Submit a written request to the TCEQ regional office that serves the county where you wish to conduct outdoor burning. Acting on behalf of the executive director, regional personnel will review your request and determine whether a practical alternative is available. If they agree that none can be found, they will issue you a written authorization to burn that outlines specific conditions you must follow to control the emissions.

*We are burning in compliance with TCEQ regulations, but the local fire marshal objects. Is our compliance with state rules not enough?*

Your compliance with TCEQ regulations does not mean that other, stricter laws, regulations, or ordinances cannot be enforced by cities, counties, or other jurisdictions. You must comply with all such regulations (e.g., county burn bans) as well as the TCEQ rules.

### Practical Alternatives to Burning

The Outdoor Burning Rule defines a practical alternative as "an economically, technologically, ecologically, and logistically viable option." The following methods can sometimes serve as practical alternatives to burning as a means to dispose of waste. With creative thinking and the help of the local TCEQ regional office, you may be able to develop ways to dispose of your waste other than burning it.

**Recycling.** Manually or mechanically separate salvageable metals from other material and sell them at a salvage yard.

**Composting.** Wastes from landscape maintenance can often be composted on-site easily and cleanly. Similar wastes—even paper, in some instances—can be composted under the right conditions.

**Mechanical chipping or mulching.** The mulch that is produced could be put to use for soil enrichment and moisture retention, or used to create compost. In some cases, the mulch could become a marketable product, be put to use where it is produced, or be given to individuals or nurseries. If the material cannot be used as a landscape mulch, chipping can still be useful to reduce the volume of waste that must be disposed of by some other means.

**Logging.** Timber sometimes can be converted to a marketable product—lumber, pulp, or firewood—as one way to reduce the costs of disposal. The remaining small limbs and brush are then much easier to dispose of through one of the other alternatives.

**Landfills.** Some landfills have recycling centers, with chippers for wood waste and collection bins for paper, plastic, and glass. Type IV landfills accept brush. Contact your local landfills for details.

**Air-curtain incineration (trench burning).** Many land-clearing contractors have portable devices, known as *trench burners* or *air-curtain incinerators*, that can be used to dispose of brush or untreated lumber with minimal emissions. These devices must be authorized by the TCEQ prior to their construction at a burn site and the contractor must have obtained a federal operating permit. Many contractors and distributors lease out these devices.

### Related TCEQ Publications

The TCEQ has a variety of publications available on issues related to outdoor burning. Several of them explain, in detail, specific alternatives to outdoor burning, for example:

- RG-325: *Used Oil Recycling Handbook: Guidance for Used Oil Handlers*
- GI-036: *Mulching and Composting*
- RG-419: *Disposal of Domestic or Exotic Livestock Carcasses*

To order single copies of these or other TCEQ publications, call TCEQ Publications Distribution at 512-239-0028 or write:

TCEQ Publications, MC 118  
P.O. Box 13087  
Austin, TX 78711-3087



## Appendix A: Outdoor Burning—When Should You Notify the TCEQ?

Purpose of Burning	Notify the TCEQ	Who Else to Notify	Rule Section
<b>Fire Training</b>			
Statewide	In writing, 10 working days prior	1	111.205(a)
Dedicated facility, used at least once per week	Every year	1	111.205(b)
Dedicated facility, used less frequently	In writing every year, and by phone or fax 24 hours before event	1	111.205(c)
<b>Disposal</b>			
Domestic waste	Not required	2	111.209(1)
Diseased animal carcasses	Not required	2	111.209(2)
Animal remains and associated medical waste	Not required	2	111.209(3)
Plant growth on-site	Not required	2, 4	111.209(4)
Plant growth at designated burn site	Verbally or in writing, by fire department employee; must be 24 hours before event	2, 4	111.209(5)
Crop residue	Verbally or in writing, when possible	2, 4	111.209(6)
Brush, off-site, by county or city	In writing; also notify verbally when possible	2, 4	111.209(7)
<b>Prescribed burns</b>			
Other than coastal salt marsh	Verbally or in writing, when possible	2, 3, 4	111.211(1)
Coastal salt marsh	15 working days prior, in writing; verbal notification also required	4	111.211(2)(A)
<b>Other</b>			
Oil spills	Spill notification and prior approval, in writing; verbal notification also required	2	111.213
Ceremonial fires	Not required	2	111.207

Note: This table shows notification requirements only. See also the general requirements for allowable burning given later in this document. In instances where a general requirement does not apply, it may be included as part of a required TCEQ authorization.

1. If there is a local air pollution-control agency, notify that agency.
2. Check local ordinances, and notify any other government having jurisdiction over the area—for example, the county fire marshal, local fire department, or local law-enforcement officials.
3. Notify the Texas Forest Service before conducting prescribed burns for forest management.
4. Before conducting the burn, determine whether any structures containing sensitive receptors (for example, residences, greenhouses, stables, etc.) are within 300 feet of, and in the general direction downwind from, the site of the burn. If so, obtain written permission from the occupants or operators of those structures before you begin the burn.



## Appendix B: TCEQ Areas and Regional Offices

### TCEQ AREA OFFICES

#### BORDER AND PERMIAN BASIN

Region 6, El Paso • Region 7, Midland  
Region 15, Harlingen • Region 16, Laredo  
1804 W. Jefferson Ave. • Harlingen, TX 78550-5247  
956-425-6010 • FAX: 956-412-5059

#### CENTRAL TEXAS

Region 9, Waco • Region 11, Austin  
Region 13, San Antonio  
P.O. Box 13087 • Austin, TX 78711-3087  
12100 Park 35 Circle • Austin, TX 78753  
512-239-6731 • FAX: 512-239-4390

#### COASTAL AND EAST TEXAS

Region 5, Tyler • Region 10, Beaumont  
Region 12, Houston • Region 14, Corpus Christi  
P.O. Box 13087 • Austin, TX 78711-3087  
12100 Park 35 Circle • Austin, TX 78753  
512-239-3607 • FAX: 512-239-4390

#### NORTH CENTRAL AND WEST TEXAS

Region 1, Amarillo • Region 2, Lubbock • Region 3, Abilene  
Region 4, Dallas/Fort Worth • Region 8, San Angelo  
5012 50th St., Ste. 100 • Lubbock, TX 79414-3426  
806-796-7092 • FAX: 806-796-7107

### TCEQ REGIONAL AND WATERMASTER OFFICES

#### 1 – AMARILLO

3918 Canyon Dr.  
Amarillo, TX 79109-4933  
806-353-9251 • FAX: 806-358-9545

#### 8 – SAN ANGELO

622 S. Oakes, Ste. K  
San Angelo, TX 76903-7035  
325-655-9479 • FAX: 325-658-5431

#### 16 – LAREDO

707 E. Calton Rd., Ste. 304  
Laredo, TX 78041-3887  
956-791-6611 • FAX: 956-791-6716

#### 2 – LUBBOCK

5012 50th St., Ste. 100  
Lubbock, TX 79414-3426  
806-796-7092 • FAX: 806-796-7107

#### 9 – WACO

6801 Sanger Ave., Ste. 2500  
Waco, TX 76710-7826  
254-751-0335 • FAX: 254-772-9241

#### TEXAS WATERMASTERS

**Brazos Watermaster**  
6801 Sanger Ave., Ste. 2500  
Waco, TX 76710-7826  
254-751-0335 • FAX: 254-772-9241

#### 3 – ABILENE

1977 Industrial Blvd.  
Abilene, TX 79602-7833  
325-698-9674 • FAX: 325-692-5869

#### 10 – BEAUMONT

3870 Eastex Fwy.  
Beaumont, TX 77703-1830  
409-898-3838 • FAX: 409-892-2119

#### Concho Watermaster

622 S. Oakes, Ste. K  
San Angelo, TX 76903-7035  
325-481-8069 or 866-314-4894  
FAX: 325-658-5431

#### 4 – DALLAS/FORT WORTH

2309 Gravel Dr.  
Fort Worth, TX 76118-6951  
817-588-5800 • FAX: 817-588-5700

#### 11 – AUSTIN

P.O. Box 13087 • Austin, TX 78711-3087  
12100 Park 35 Circle • Austin, TX 78753  
512-339-2929 • FAX: 512-339-3795

#### Rio Grande Watermaster

*Eagle Pass Office*  
P.O. Box 1185  
Eagle Pass, TX 78853-1185  
1152 Ferry St., Ste. E & F  
Eagle Pass, TX 78852-4367  
830-773-5059 • 800-609-1219  
FAX: 830-773-4103

#### Stephenville Office

(Concentrated Animal Feeding Operations)  
580 W. Lingleville Rd., Ste. D  
Stephenville, TX 76401-2209  
254-965-9200 or 800-687-7078

#### 12 – HOUSTON

5425 Polk St., Ste. H  
Houston, TX 77023-1452  
713-767-3500 • FAX: 713-767-3520

#### 5 – TYLER

2916 Teague Dr.  
Tyler, TX 75701-3734  
903-535-5100 • FAX: 903-595-1562

#### 13 – SAN ANTONIO

14250 Judson Rd.  
San Antonio, TX 78233-4480  
210-490-3096 • FAX: 210-545-4329

#### Harlingen Office

1804 W. Jefferson Ave.  
Harlingen, TX 78550-5247  
956-430-6056 or 800-609-1219  
FAX: 956-430-6052

#### 6 – EL PASO

401 E. Franklin Ave., Ste. 560  
El Paso, TX 79901-1212  
915-834-4949 • FAX: 915-834-4940

#### 14 – CORPUS CHRISTI

NRC Bldg., Ste. 1200,  
6300 Ocean Dr., Unit 5839  
Corpus Christi, TX 78412-5839  
361-825-3100 • FAX: 361-825-3101

#### South Texas Watermaster

14250 Judson Rd.  
San Antonio, TX 78233-4480  
210-490-3096 or 800-733-2733  
FAX: 210-545-4329

#### 7 – MIDLAND

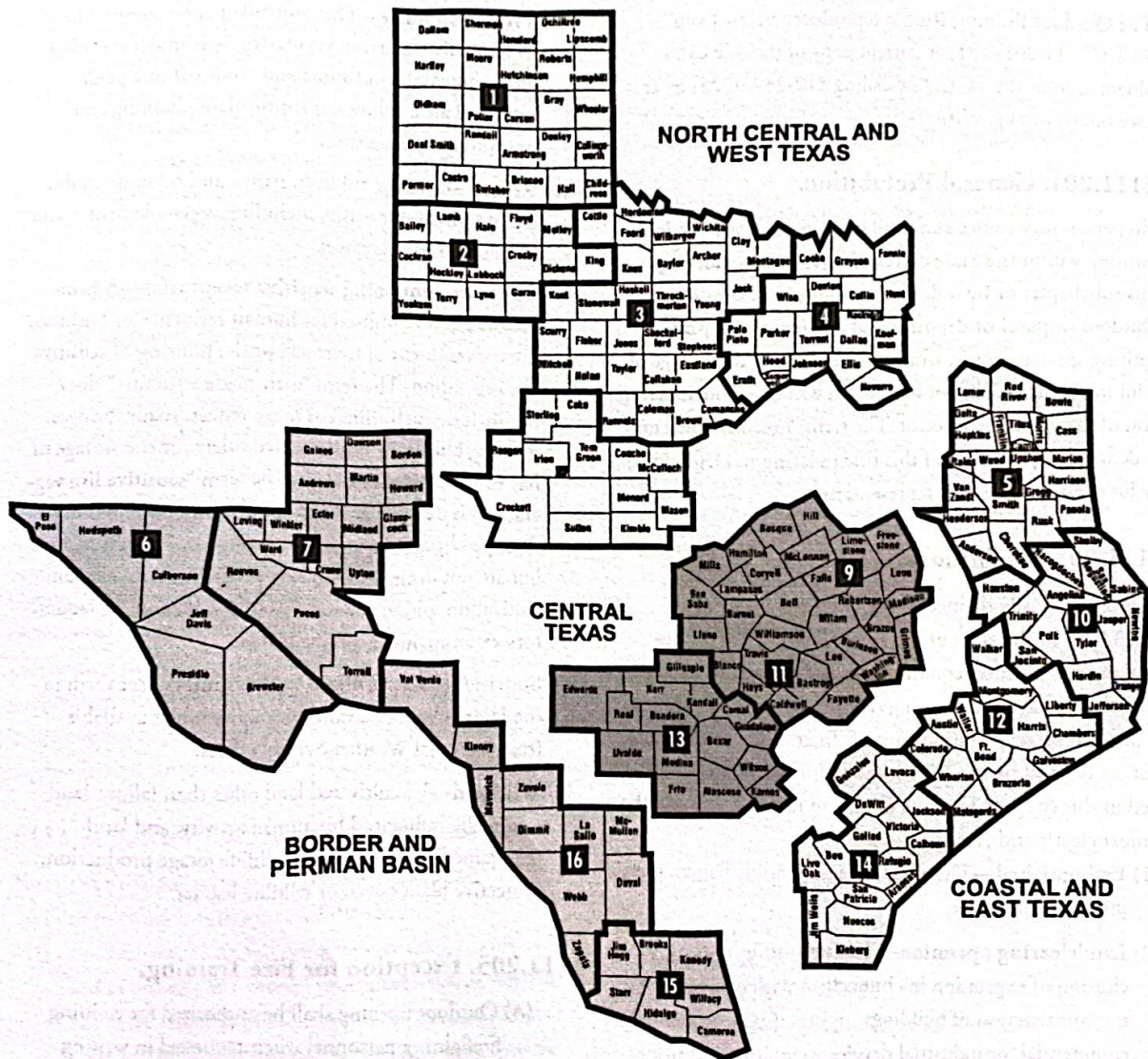
9900 W. IH-20, Ste. 100  
Midland, TX 79706  
432-570-1359 • FAX: 432-561-5512

#### 15 – HARLINGEN

1804 W. Jefferson Ave.  
Harlingen, TX 78550-5247  
956-425-6010 • FAX: 956-412-5059



**TCEQ Areas and Regional Offices (continued)**



**TCEQ REGIONS**

- |                            |                     |                    |                          |
|----------------------------|---------------------|--------------------|--------------------------|
| <b>1</b> AMARILLO          | <b>5</b> TYLER      | <b>9</b> WACO      | <b>13</b> SAN ANTONIO    |
| <b>2</b> LUBBOCK           | <b>6</b> EL PASO    | <b>10</b> BEAUMONT | <b>14</b> CORPUS CHRISTI |
| <b>3</b> ABILENE           | <b>7</b> MIDLAND    | <b>11</b> AUSTIN   | <b>15</b> HARLINGEN      |
| <b>4</b> DALLAS/FORT WORTH | <b>8</b> SAN ANGELO | <b>12</b> HOUSTON  | <b>16</b> LAREDO         |



## Appendix C: Outdoor Burning Rule

The Outdoor Burning Rule is reproduced below from 30 TAC 111.201–221. A current copy of the rule can be obtained from the TCEQ by calling 512-239-0028, or at <www.tceq.texas.gov/rules>.

### §111.201. General Prohibition.

No person may cause, suffer, allow, or permit any outdoor burning within the State of Texas, except as provided by this subchapter or by orders or permits of the commission. Outdoor disposal or deposition of any material capable of igniting spontaneously, with the exception of the storage of solid fossil fuels, shall not be allowed without written permission of the executive director. The term "executive director," as defined in Chapter 3 of this title (relating to Definitions), includes authorized staff representatives.

### §111.203. Definitions.

Unless specifically defined in the Texas Clean Air Act (TCAA) or in the rules of the Texas Commission on Environmental Quality (commission), the terms used by the commission have the meanings commonly ascribed to them in the field of air pollution control. In addition to the terms that are defined by the TCAA, the following terms, when used in this chapter, have the following meanings, unless the context clearly indicates otherwise.

- (1) **Extinguished**—The absence of any visible flames, glowing coals, or smoke.
- (2) **Landclearing operation**—The uprooting, cutting, or clearing of vegetation in connection with conversion for the construction of buildings, rights-of-way, residential, commercial, or industrial development, or the clearing of vegetation to enhance property value, access, or production. It does not include the maintenance burning of on-site property wastes such as fallen limbs, branches, or leaves, or other wastes from routine property clean-up activities, nor does it include burning following clearing for ecological restoration.
- (3) **Neighborhood**—A platted subdivision or property contiguous to and within 300 feet of a platted subdivision.
- (4) **Practical alternative**—An economically, technologically, ecologically, and logistically viable option.

- (5) **Prescribed burn**—The controlled application of fire to naturally occurring vegetative fuels under specified environmental conditions and confined to a predetermined area, following appropriate planning and precautionary measures.
- (6) **Refuse**—Garbage, rubbish, paper, and other decayable and nondecayable waste, including vegetable matter and animal and fish carcasses.
- (7) **Structure containing sensitive receptor(s)**—A man-made structure utilized for human residence or business, the containment of livestock, or the housing of sensitive live vegetation. The term "man-made structure" does not include such things as range fences, roads, bridges, hunting blinds, or facilities used solely for the storage of hay or other livestock feeds. The term "sensitive live vegetation" is defined as vegetation that has potential to be damaged by smoke and heat, examples of which include, but are not limited to, nursery production, mushroom cultivation, pharmaceutical plant production, or laboratory experiments involving plants.
- (8) **Sunrise/Sunset**—Official sunrise/sunset as set forth in the United States Naval Observatory tables available from National Weather Service offices.
- (9) **Wildland**—Uncultivated land other than fallow, land minimally influenced by human activity, and land maintained for biodiversity, wildlife forage production, protective plant cover, or wildlife habitat.

### §111.205. Exception for Fire Training.

- (A) Outdoor burning shall be authorized for training firefighting personnel when requested in writing and when authorized either verbally or in writing by the local air pollution control agency. In the absence of such local entities, the appropriate commission regional office shall be notified. The burning shall be authorized if notice of denial from the local air pollution control agency, or commission regional office is not received within 10 working days after the date of postmark or the date of personal delivery of the request.
- (B) Facilities dedicated solely for firefighting training, at which training routinely will be conducted on a



frequency of at least once per week, shall submit an annual written notification of intent to continue such training to the appropriate commission regional office and any local air pollution control agency.

- (C) Facilities dedicated solely for firefighting training, at which training is conducted less than weekly, shall provide an annual written notification of intent, with a telephone or electronic facsimile notice 24 hours in advance of any scheduled training session. No more than one such notification is required for multiple training sessions scheduled within any one-week period, provided the initial telephone/facsimile notice includes all such sessions. Both the written and telephone notifications shall be submitted to the appropriate commission regional office and any local air pollution control agency.
- (D) Authorization to conduct outdoor burning under this provision may be revoked by the executive director if the authorization is used to circumvent other prohibitions of this subchapter.

**§111.207. Exception for Fires Used for Recreation, Ceremony, Cooking, and Warmth.**

Outdoor burning shall be authorized for fires used solely for recreational or ceremonial purposes, or in the noncommercial preparation of food, or used exclusively for the purpose of supplying warmth during cold weather. Such burning shall be subject to the requirements of §111.219(7) of this title (relating to General Requirements for Allowable Outdoor Burning).

**§111.209. Exception for Disposal Fires.**

Except as provided in Local Government Code, §352.082, outdoor burning is authorized for the following:

- (1) domestic waste burning at a property designed for and used exclusively as a private residence, housing not more than three families, when collection of domestic waste is not provided or authorized by the local governmental entity having jurisdiction, and when the waste is generated only from that property. Provision of waste collection refers to collection at the premises where the waste is generated. The term "domestic waste" is defined in §101.1 of this title (relating to Definitions). Wastes normally resulting from the function of life within a residence that can be burned include such things as kitchen garbage, untreated lumber, cardboard boxes, packaging (including plastics and rubber), clothing, grass, leaves, and branch trimmings. Examples of wastes not consid-

ered domestic waste that cannot be burned, include such things as tires, non-wood construction debris, furniture, carpet, electrical wire, and appliances;

- (2) diseased animal carcass burning when burning is the most effective means of controlling the spread of disease;
- (3) veterinarians in accordance with Texas Occupations Code, §801.361, Disposal of Animal Remains;
- (4) on-site burning of trees, brush, grass, leaves, branch trimmings, or other plant growth, by the owner of the property or any other person authorized by the owner, and when the material is generated only from that property:
  - (A) in a county that is part of a designated nonattainment area or that contains any part of a municipality that extends into a designated nonattainment area; if the plant growth was generated as a result of right-of-way maintenance, landclearing operations, and maintenance along water canals when no practical alternative to burning exists. Such burning is subject to the requirements of §111.219 of this title (relating to General Requirements for Allowable Outdoor Burning). Commission notification or approval is not required; or
  - (B) in a county that is not part of a designated nonattainment area and that does not contain any part of a municipality that extends into a designated nonattainment area; this provision includes, but is not limited to, the burning of plant growth generated as a result of right-of-way maintenance, landclearing operations, and maintenance along water canals. Such burning is subject to local ordinances that prohibit burning inside the corporate limits of a city or town and that are consistent with the Texas Clean Air Act, Chapter 382, Subchapter E, Authority of Local Governments, and the requirements of §111.219(3), (4), (6), and (7) of this title. Commission notification or approval is not required.
- (5) at a site designated for consolidated burning of waste generated from specific residential properties. A designated site must be located outside of a municipality and within a county with a population of less than 50,000. The owner of the designated site or the owner's authorized agent shall:
  - (A) post at all entrances to the site a placard measuring a minimum of 48 inches in width and 24 inches in height and containing, at a minimum, the words "DESIGNATED BURN SITE - No burning of



any material is allowed except for trees, brush, grass, leaves, branch trimmings, or other plant growth generated from specific residential properties for which this site is designated. All burning must be supervised by a fire department employee. For more information call (PHONE NUMBER OF OWNER OR AUTHORIZED AGENT)." The placard(s) must be clearly visible and legible at all times;

- (B) designate specific residential properties for consolidated burning at the designated site;
  - (C) maintain a record of the designated residential properties. The record must contain the description of a platted subdivision and/or a list of each property address. The description must be made available to commission or local air pollution control agency staff within 48 hours, if requested;
  - (D) ensure that all waste burned at the designated site consists of trees, brush, grass, leaves, branch trimmings, or other plant growth;
  - (E) ensure that all such waste was generated at specific residential properties for which the site is designated; and
  - (F) ensure that all burning at the designated site is directly supervised by an employee of a fire department who is part of the fire protection personnel, as defined by Texas Government Code, §419.021, and is acting in the scope of the person's employment. The fire department employee shall notify the appropriate commission regional office with a telephone or electronic facsimile notice 24 hours in advance of any scheduled supervised burn. The commission shall provide the employee with information on practical alternatives to burning. Commission approval is not required;
- (6) crop residue burning for agricultural management purposes when no practical alternative exists. Such burning shall be subject to the requirements of §111.219 of this title and structures containing sensitive receptors must not be negatively affected by the burn. When possible, notification of the intent to burn should be made to the appropriate commission regional office prior to the proposed burn. Commission notification or approval is not required. This section is not applicable to crop residue burning covered by an administrative order; and
- (7) brush, trees, and other plant growth causing a detrimental public health and safety condition burned by a county or municipal government at a site it owns upon

receiving site and burn approval from the executive director. Such a burn can only be authorized when there is no practical alternative, and it may be done no more frequently than once every two months. Such burns cannot be conducted at municipal landfills unless authorized under §111.215 of this title (relating to Executive Director Approval of Otherwise Prohibited Outdoor Burning), and shall be subject to the requirements of §111.219 of this title.

**§111.211. Exception for Prescribed Burn.**

Outdoor burning shall be authorized for:

- (1) Prescribed burning for forest, range and wildland/wildlife management, and wildfire hazard mitigation purposes, with the exception of coastal salt-marsh management burning. Such burning shall be subject to the requirements of §111.219 of this title (relating to General Requirements for Allowable Outdoor Burning), and structures containing sensitive receptors must not be negatively affected by the burn. When possible, notification of intent to burn should be made to the appropriate commission regional office prior to the proposed burn. Commission notification or approval is not required.
- (2) Coastal salt-marsh management burning conducted in Aransas, Brazoria, Calhoun, Chambers, Galveston, Harris, Jackson, Jefferson, Kleberg, Matagorda, Nueces, Orange, Refugio, and San Patricio Counties. Coastal salt-marsh burning in these counties shall be subject to the following requirements:
  - (A) All land on which burning is to be conducted shall be registered with the appropriate commission regional office using a United States Geological Survey map or equivalent upon which are identified significant points such as roads, canals, lakes, and streams, and the method by which access is made to the site. For large acreage, the map should be divided into manageable blocks with identification for each defined block. The information must be received for review at least 15 working days before the burning takes place.
  - (B) Prior to any burning, notification, either verbal or written, must be made to, and authorization must be received from the appropriate commission regional office. Notification must identify the specific area and/or block to be burned, approximate start and end time, and a responsible party who can be contacted during the burn period.



(C) Such burning shall be subject to the requirements of §111.219 of this title.

**§111.213. Exception for Hydrocarbon Burning.**

Outdoor burning shall be authorized for hydrocarbon burning from pipeline breaks and oil spills only upon proper notification as set forth in §101.6 of this title (relating to Notification Requirements for Major Upset), and if the executive director has determined that the burning is necessary to protect the public welfare. Sampling and monitoring may be required to determine and evaluate environmental impacts.

**§111.215. Executive Director Approval of Otherwise Prohibited Outdoor Burning.**

If not otherwise authorized by this chapter, outdoor burning may be authorized by written permission from the executive director if there is no practical alternative and if the burning will not cause or contribute to a nuisance, traffic hazard or to a violation of any federal or state primary or secondary ambient air standard. The executive director may specify procedures or methods to control or abate emissions from outdoor burning authorized pursuant to this rule. Authorization to burn may be revoked by the executive director at any time if the burning causes nuisance conditions, is not conducted in accordance with the specified conditions, violates any provision of an applicable permit, or causes a violation of any air quality standard.

**§111.219. General Requirements for Allowable Outdoor Burning.**

Outdoor burning which is otherwise authorized shall also be subject to the following requirements when specified in any section of this subchapter.

- (1) Prior to prescribed or controlled burning for forest management purposes, the Texas Forest Service shall be notified.
- (2) Burning must be outside the corporate limits of a city or town except where the incorporated city or town has enacted ordinances which permit burning consistent with the Texas Clean Air Act, Subchapter E, Authority of Local Governments.
- (3) Burning shall be commenced and conducted only when wind direction and other meteorological conditions are such that smoke and other pollutants will not cause adverse effects to any public road, landing strip, navigable water, or off-site structure containing sensitive receptor(s).

(4) If at any time the burning causes or may tend to cause smoke to blow onto or across a road or highway, it is the responsibility of the person initiating the burn to post flag-persons on affected roads.

(5) Burning must be conducted downwind of or at least 300 feet (90 meters) from any structure containing sensitive receptors located on adjacent properties unless prior written approval is obtained from the adjacent occupant with possessory control.

(6) Burning shall be conducted in compliance with the following meteorological and timing considerations:

(A) The initiation of burning shall commence no earlier than one hour after sunrise. Burning shall be completed on the same day not later than one hour before sunset, and shall be attended by a responsible party at all times during the active burn phase when the fire is progressing. In cases where residual fires and/or smoldering objects continue to emit smoke after this time, such areas shall be extinguished if the smoke from these areas has the potential to create a nuisance or traffic hazard condition. In no case shall the extent of the burn area be allowed to increase after this time.

(B) Burning shall not be commenced when surface wind speed is predicted to be less than six miles per hour (mph) (five knots) or greater than 23 mph (20 knots) during the burn period.

(C) Burning shall not be conducted during periods of actual or predicted persistent low level atmospheric temperature inversions.

(7) Electrical insulation, treated lumber, plastics, non-wood construction/demolition materials, heavy oils, asphaltic materials, potentially explosive materials, chemical wastes, and items containing natural or synthetic rubber must not be burned.

**§111.221. Responsibility for Consequences of Outdoor Burning.**

The authority to conduct outdoor burning under this regulation does not exempt or excuse any person responsible from the consequences, damages, or injuries resulting from the burning and does not exempt or excuse anyone from complying with all other applicable laws or ordinances, regulations, and orders of governmental entities having jurisdiction, even though the burning is otherwise conducted in compliance with this regulation.



## Appendix D: Background

30 TAC 111.201 prohibits outdoor burning in Texas, except as stated in Sections 111.205–15. It also prohibits storing spontaneously combustible materials other than “solid fossil fuel” (i.e., coal) outside. The exception for coal was made to be consistent with the intent expressed in the preamble to the 1989 revisions to the rule.

**Land-clearing operation.** The last sentence of this definition indicates two different kinds of exclusions. The first, for on-site property waste burns, is covered in Section 111.209(4); the second, for burns for ecological restoration, is covered in Section 111.211(1). In practice, prescribed burns and land-clearing burns may have similarities; occasionally it is necessary in a prescribed burn to bulldoze trees or brush into piles to obtain the appropriate effect. The key difference is the concept of “conversion.” The goal of land clearing is a major change in land use, i.e. the conversion of the land from one use to another; the goal of a prescribed burn is to restore, maintain, or renew the ecosystem.

**Practical alternative.** This definition contains four criteria, each of which must be considered to determine whether an alternative is practical. The standard of judgment should be that of a reasonable person. For example, an option that is technologically available but neither economically affordable nor logistically possible is not practical. A method other than burning may not be practical if it cannot achieve the desired ecological outcome. An alternative that is technologically, economically, and logistically feasible is not practical if it causes a greater ecological harm than burning.

In Section 111.205(b), the wording “at which training routinely will be conducted” is used to eliminate potential confusion. For example, if training is conducted weekly except during holidays and when meteorological conditions are unfavorable, the facility still would qualify under this section of the rule. Other similar situations may also qualify.

Section 111.209(1) specifies that collection of domestic waste by the local governmental agency or authorized agent must occur on the premises where the waste is generated. The governmental provision of a transfer or convenience station to which residents may bring waste does not constitute collection of domestic waste; therefore, burning may take place in that instance. Any authorization of collection services by a government or other jurisdiction must be specific and well-defined. For a government merely to say it

is OK for anybody to collect garbage commercially within its jurisdiction does not constitute authorized collection for the purposes of this rule.

Section 111.209(6) recognizes an agricultural practice that continues in many parts of the state. The key factor is whether a practical alternative exists. Determining whether there is a practical alternative requires evaluating such things as the type of crop, soil moisture level, soil nutrient benefits, cropping sequence, and cost of alternative disposal methods.

Section 111.209(7) was added to deal with situations in which accumulated vegetation has the potential to do such things as obstruct the flow of water and cause flooding or provide habitat for vermin, but where it is not feasible to burn on-site because doing so would create a nuisance or traffic hazard. Each such burn requires prior approval from the regional office. A site cannot be designated by the municipality or county for continual use, as a standard operating procedure, to augment normal brush disposal. The intent is that the government (or other organization) will not conduct such a burn more frequently than once every two months, no matter how many sites it may have available. For example, it is not permissible for it to conduct a burn at one site and then have another burn at another site a few days later, circumventing the intent of the rule.

Section 111.211 recognizes the use of fire as a necessary management tool for particular situations for which there is no practical alternative. All such burns are subject to the General Requirements for Allowable Outdoor Burning (111.219).

Section 111.213 sets forth a mechanism for remediation to avoid additional environmental degradation in an emergency, such as preventing a petroleum substance from entering a waterway. Once the emergency is under control, it is not permissible to burn the material used to absorb the hydrocarbon or other wastes associated with emergency control. This section should not be used to sanction disposal. Note that the Outdoor Burning Rule refers to Section 101.6 (Notification Requirements for Major Upsets). However, that section has been repealed and replaced by Section 101.201 (Emissions Events Reporting and Record-keeping Requirements).

Section 111.219(6)(A) allows flexible burn opportunities with consideration for meteorological conditions conducive to dispersion. The requirement for having a responsible



## OUTDOOR BURNING IN TEXAS

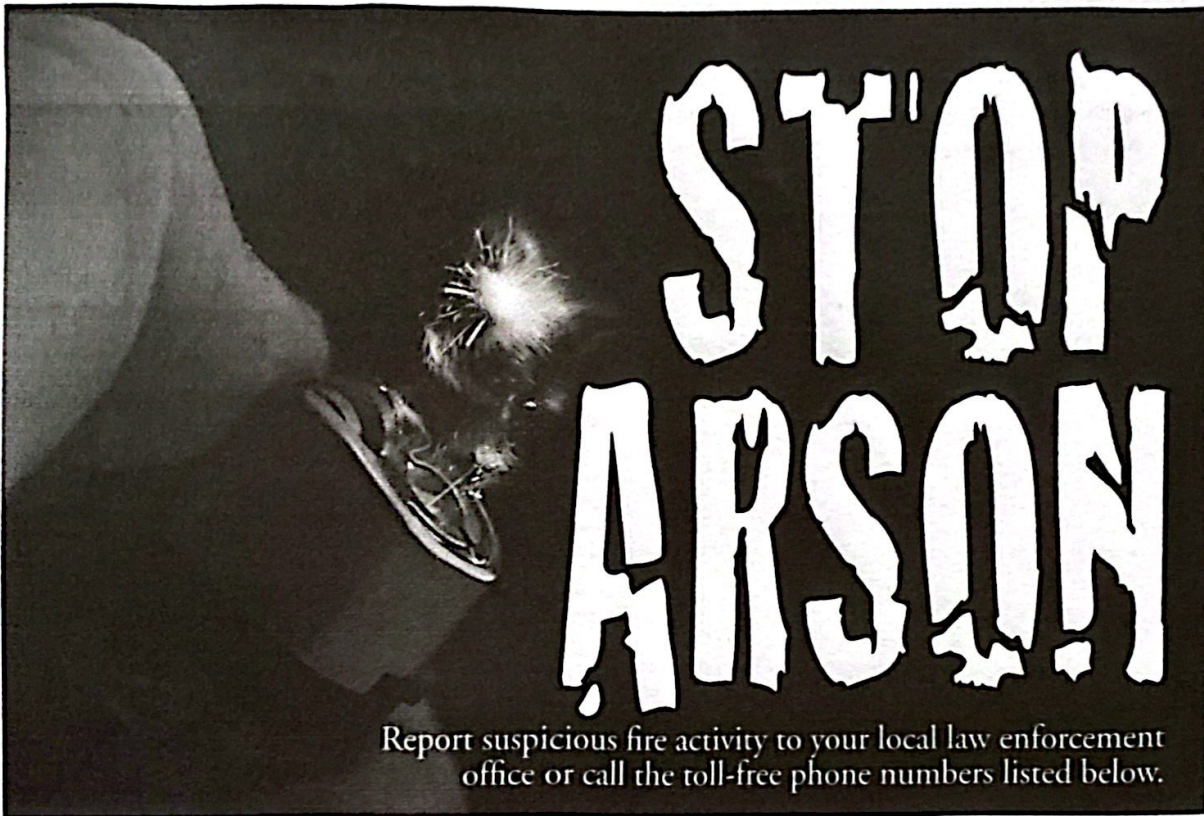
party in attendance during the active burn phase does not mean someone has to be in attendance once the fire is virtually complete and is not advancing, i.e., once it principally consists of glowing coals with possibly some patchy residual fires. The extent of the burn may not be allowed to increase after one hour before sunset. A fire that has burned down to glowing coals has consumed most of the volatile substances and will not progress as a flame. It is understood that items such as stumps may burn for several days. Residual fires and smoldering objects without the potential to create a nuisance or traffic hazard need not be quenched. For example, if you

wish to burn 100 acres with a road on one side and no sensitive structures in other directions from the burn area, you would be prudent to extinguish residual fires and smoldering objects within a swath along the boundary with the road where the potential for nuisance or traffic hazard exists, but allow the remaining portion of the burn site to subside at a natural rate.

Section 111.219(7) specifically prohibits the burning of insulated wire without prohibiting the burning of piles created by fence demolition that contain wire and untreated wood wastes.



**Appendix E:  
Arson Resources and Contact Information**



**Texas Toll-Free Arson Hotline**  
1-877-4FIRE45 (1-877-434-7345)

**Texas A&M Forest Service Wildland Arson Hotline**  
800-364-3470

You may be eligible for a reward up to \$2,000 if your information leads to the arrest and grand jury indictment of the person or persons responsible for arson.

